

Supreem Pharmaceuticals Mysore Pvt Ltd

Date: 16/07/2022

Place: Nanjangud, Mysore

Semester: 4th

About the Industry

Supreem Pharmaceuticals Mysore Pvt. Ltd. is a 30 year old company possessing and continuously innovating its expertise in Stabilized Vitamins, Herbal Extracts & Formulations, Food Supplements, Tasteless Minerals and API's. Located in the Royal City of Mysore. Supreem caters to the Vitamin/Herbal needs of companies in India as well as all over the world.



Pic. 01: Studnets and faxculy with with HR, Supreem Pharmaceuticals

Anheuser Busch InBev India Ltd

(Unit: SPR Distilleries Pvt. Ltd)

Place: Mysuru District, Bannur Date: 16/03/2022

About the Industry

AB InBev's Brewery in the temple town of T Narasipura, 45 minutes away from Mysuru will brew Budweiser from 100% renewable energy. The factory stands out amidst the endless greenery of T Narasipura, a quiet temple town in Mysuru district of Karnataka, where Anheuser-Busch (AB InBev), the Belgian-Brazilian company and world's biggest beer producer, have set up the brewery on a 64 acre plot. Unlike the 9 other breweries owned by AB InBev in India, the SPR brewery in T Narasipura is one-of-its kind in the country. The one-year-old brewery which had been running on conventional energy, has been transformed entirely into a state-of-the art solar powered unit in 2018, a big achievement in terms of making new inroads into carbon reduction in the country. And it does not end here. The company, as part of its sustainability initiatives, has promised that every Budweiser in India will be brewed on 100% renewable electricity. And T Narasipura has become the ground zero from which this initiative will spread out.

Visit Details

In this visit students were exposed to the following concepts:

- Different products manufactured in AB InBev.
- Ingredients used to manufacture beer
- History of beer
- Process of beer manufacturing
- Testing of a beer
- Filling and seeming of beer bottles and Tins
- Packaging of beer bottles and Tins
- Cleaning and reuse of used beer bottles.



Pic. 3: Beer testing department



Pic. 4: Seaming and packaging

JN POWER BATTERIES

Date: 23/12/2022

ABOUT COMPANY

- ABOUT JN Power Batteries JN Power Batteries is an ISO certified company engaged in the manufacture of Lead Acid Batteries. We manufacture a wide range of lead acid automotive batteries for vehicles and Tubular Batteries for Solar and Inverter/ UPS Applications. We are committed to provide excellent products, good service, low maintenance cost among the available products in the market. We have effective Production and marketing team with rich experience in Battery industry. Our aim is to improve our products with all aspects such as quality, price, service, customer satisfaction and etc. The Company focuses on being a responsible corporate citizen through active participation in solar power projects and also working with electric vehicles manufacturers.

ABOUT PRODUCTS

Two different technologies are found in the industry.

- Tubular technology
- Automotive technology

OUR FACILITIES

We had state-of-the-art manufacturing unit located in KIADB Industrial Area , Kadakola Mysuru – 571 311, Unit is well equipped to facilitate complete in house production, starting from grids to the final assembled batteries and charging

The processes include:

- Casting
- Pasting
- Filling
- Formation and curing
- Assembly
- Battery charging and Testing
- Research and development lab

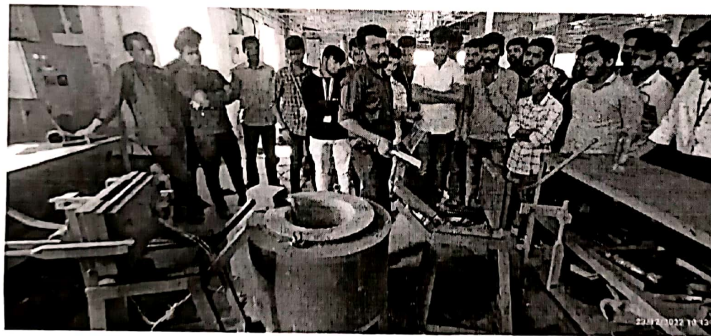
The processes include:

- Extensive Application specific testing.
- Auto controlled charging and discharging section.

- In house Lab for Testing.

CASTING

Casting is a manufacturing process in which a liquid material is usually poured into a mold, which contains a hollow cavity of the desired shape, and then allowed to solidify. The solidified part is also known as a casting, which is ejected or broken out of the mold to complete the process. Casting materials are usually metals or various time setting materials that cure after mixing two or more components together; examples are epoxy, concrete, plaster and clay. Casting is most often used for making complex shapes that would be otherwise difficult or uneconomical to make by other methods. Heavy equipment like machine tool beds, ships' propellers, etc. can be cast easily in the required size, rather than fabricating by joining several small pieces.



➤ ASSEMBLY & BATTERY CHARGING AND TESTING

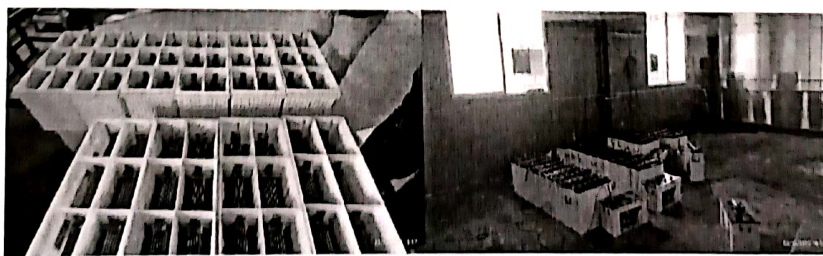


Fig: Battery assembly & Battery charging

INDUSTRIAL VISIT IMAGES



Date: 22/02/2024

Company: MYSURU MILK UNION LTD-KMF

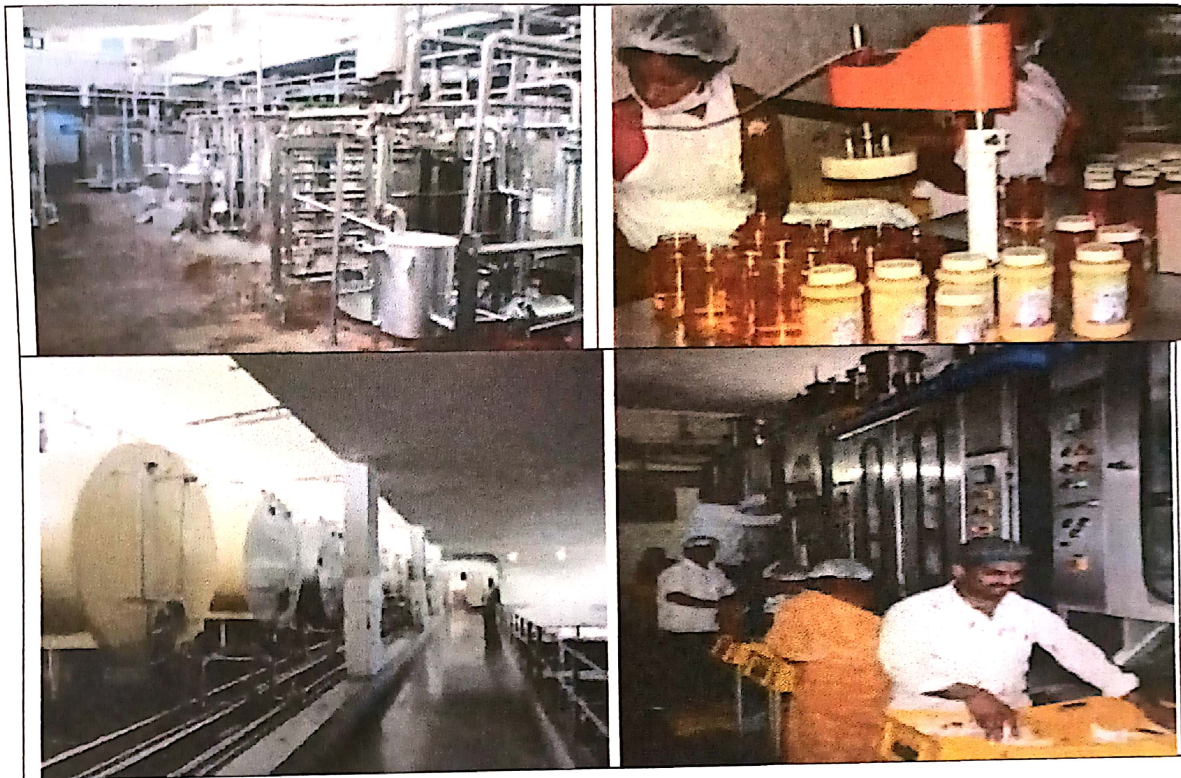
ABOUT THE UNION

Mysore Dairy with the capacity of 10 TLPD was started in the year 1965 under the control of the Department of Animal Husbandry and Veterinary Services of Karnataka State, which was transferred to Karnataka Dairy Development Corporation in the year 1974. The capacity was expanded to 60 TLPD in 1980 under the scheme operation flood and transferred to the Karnataka Milk Federation in 1984. As per the Government policy the Dairy and its Chilling Centers were handed over to Mysore Milk Union on 01.06.1987. The capacity was expanded to 100 TLPD under the Operation Flood II and further expanded to 180 TLPD under Perspective Plan I Programme. Later capacity was expanded to 300 TLPD. Consequent to the bifurcation of Mysore District into Mysore and Chamarajanagar Districts, this Union is renamed as Mysore-Chamarajanagar District Coop Milk Producers Societies Union Ltd. Later from April 2015 Bifurcation of Mysore-Chamarajanagar district milk union as Mysore milk union and Chamarajanagar milk union. The new Mega dairy plant is installed with capacity 6 LLPD expandable to 8 LLPD at Alanahally Mysore.

At present the dairy is equipped with a processing capacity of 6.0 LLPD. Packing and selling about 5.0 Lakh liters per day. Apart from this, the dairy is producing Curds, Spicy butter milk, Peda(Regular,Kesar) , Cashew Burfy, Paneer, Nandini bite, Mysore Pak,Sweet Lassi, Khova and Ghee. In its fold, there are chilling centres located in Hunsur and HD Kote. For the past few years, the milk procurement and sales increased beyond our expectation.

VARIOUS PROCESSING DEPARTMENTS VISITED

1. Milk Processing
2. Preparation of Various Milk Products and Sweets
3. Boiler Section
4. Milk Storage Units



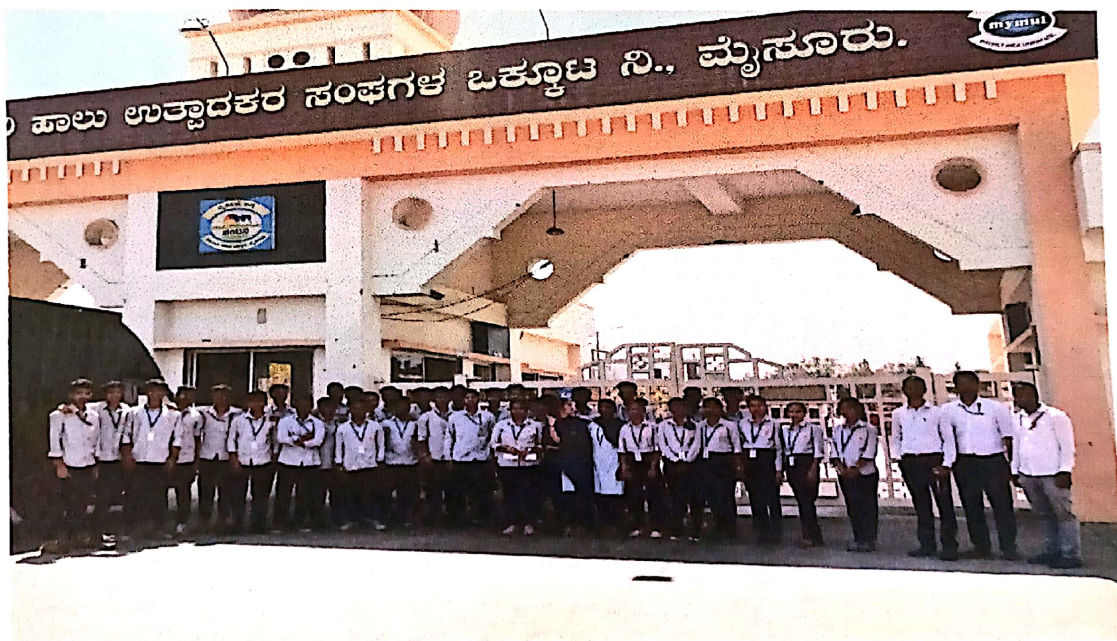
Impact of the visit

The visit extended to the milk processing unit, emphasizing modern technology in stages like separation, pasteurization, and packaging. Stringent quality control measures were evident, ensuring the purity and safety of dairy products. Students gained insights into the manufacturing processes of butter, cheese, yogurt, and ice cream, witnessing nandini's commitment to hygiene standards. The visit also explored nandini's adoption of automation and advanced technology, showcasing improved efficiency and product quality.

Packaging, distribution, and marketing strategies were integral components, underscoring nandini's iconic advertising campaigns. The cooperative model's significance was emphasized, revealing its positive impact on farmers' lives. Ms. Shkunthla also addressed students' queries on duty shifts, employment, and the hiring process.



Students with section head



[Signature]
HEAD OF THE DEPARTMENT
Department Of Mechanical Engineering
Maharaja Institute Of Technology Thandavapura
Mysuru



Date: 17/11/2023

Semester: 7th

Company: SUJAYA INDUSTRIES PVT LTD, MYSURU

ABOUT THE COMPANY

Sujaya Industries is a leader in custom sheet metal fabrication that has been operating in Mysore since 1984. It is an ISO 9001:2015 Organization. They deliver a comprehensive and holistic solution to meet all sheet metal needs. They offer a full design service, in addition to laser cutting, NC bending, Power Press, Pipe Bending, Welding and fabrication of ferrous and non-ferrous materials. Plus, they can finish the job with powder coating, assembly and integration. Their expertise lies in Sheet Metal Fabrication and Pressed Components. they supply services nationally across a broad range of sectors, including Agricultural, Automotive, Construction, and Switchgear. Sujaya Industries is meticulous not only in the quality of the finished product but also in building close and long-lasting partnerships with customers. They are happy to assist in any way you need us to as we manage your project from design to delivery.

ABOUT DEPARTMENTS

1. Paint shop

2. Work shop

i. Sheet metal fabrication shop

ii. Tube bending shop

iii. Shearing shop

iv. Power press shop

v. Welding shop

vi. Press brake shop

vii. Laser cutting shop

PHOTO GALLERY



IMPACT OF THE VISIT

Students were exposed to different fabrication and design areas, which has given practical application knowledge completely regarding basic sheet metal fabrication which are used in different fields of applications.

INDUSTRIAL VISIT CO-ORDINATOR

HOD

HEAD OF THE DEPARTMENT
Department Of Mechanical Engineering
Maharaja Institute Of Technology Thandava
Mysuru

BEML, Mysuru Complex

Date: 13/12/2021

Place: Mysore

Semester: 7th

About the Industry

BEML Limited, the trusted name for over 52 years in mining and construction industry, channels its expertise into the priority sector of energy with the manufacture of fuel-efficient diesel engines. Established in the year 1991 in Mysuru, with technical know-how from Komatsu Japan, BEML diesel engines are built for maximum reliability, high performance and lasting value. These engines are backed by the facility of application engineering, multi-location sales & service network and rehabilitation facility.

Engine Division manufactures heavy duty Diesel Engines for application on a wide variety of Earth Moving, Mining and Construction Machinery and Defense Equipment. Apart from these, the engines are also offered for other industrial applications as well as diesel generator sets. BEML Engines are used on Bull Dozers, Dump Trucks, Motor Graders, Wheel Loaders, Pipe Layers, Hydraulic Excavators, Loading Shovels, C Crane, Aircraft Towing Tractors, Backhoe Loaders, Water Sprinklers and Heavy Duty Trucks. These Engines are capable of operations over a wide terrain right from sea level conditions to high altitude (19,000ft) as well as under sub-zero conditions.

Visit Details

As part of the Central Government's 'Azadi ka Amrit Mahotsav' initiative, Expo on products manufactured by BEML, Mysuru was organized. Since BEML is closely related to Mechanical Engineering domain, students of Mechanical Engineering were taken on an Industrial Visit to BEML, Mysuru on 13/12/2021. Students were given demonstrations on different trucks available at the plant as well as different engines used for them. Different functionalities of the trucks were also demonstrated.



Pic. 3: Employee explaining dump truck



Pic.4: Students and teachers with BEML Expo Team



MAHARAJA INSTITUTE OF TECHNOLOGY THANDAVAPURA
NH 766, Nanjangud Taluk, Mysuru- 571 302
(An ISO 9001:2015 and ISO 21001:2018 Certified Institution)
(Affiliated to VTU, Belagavi and approved by AICTE, New Delhi)



Date: 17/08/2023

Company: Schneider Electric India Private Limited

The visit commenced with an overview of the production and assembly procedures, our industrial tour at Schneider electric India private limited showcased the manufacturing and assembly methods for both 3 phase and single phase meters. As energy management and automation solutions, Schneider electric granted us a deep understanding of their production processes. The visit unveiled the precise stages encompassing component fabrication, stringent quality assessments, meticulous assembly, calibration and thorough testing of 3-phase and single phase meters.

The industrial visit to Schneider electric India private limited was an enlightening experience. Observing the intricate assembly procedures for both 3-phase and single phase meters underscored the firms dedication to precision, excellence and technological advancement. The excursion not only deepened our understanding of the importance of precision energy measurement in the modern era but also afforded us a glimpse into the company's unwavering focus on quality, precision and ecological responsibility. This hands-on experience significantly bridged the gap between academic theory and practical industrial applications.



[Handwritten signature]
18/09/2023



Sujaya Industries Pvt Ltd

Date: 05/11/2022

Place: Mysuru

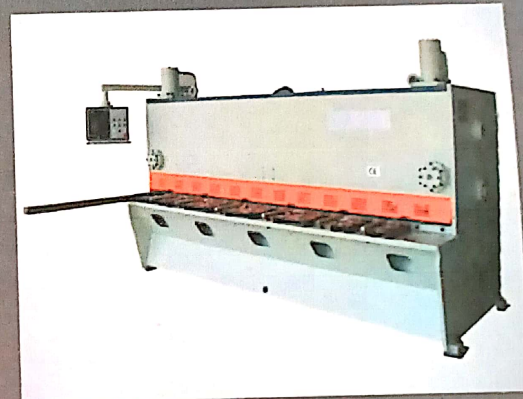
Semester: 7th

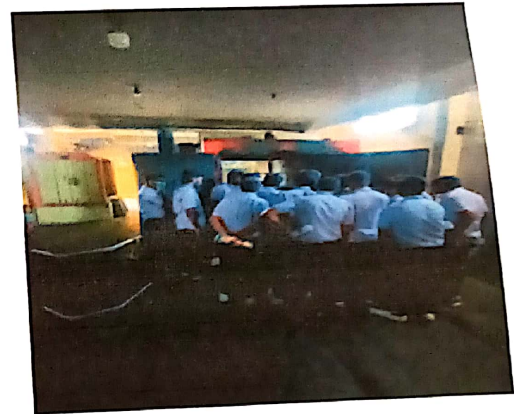
About the Industry

Sujaya Industries is a leader in custom sheet metal fabrication that has been operating in Mysore since 1984. We are an ISO 9001:2015 Organization. We deliver a comprehensive and holistic solution to meet all sheet metal needs. We offer a full design service, in addition to laser cutting, NC bending, Power Press, Pipe Bending, Welding and fabrication of ferrous and non-ferrous materials. Plus, we can finish the job with powder coating, assembly and integration.

Our expertise lies in Sheet Metal Fabrication and Pressed Components. We supply services nationally across a broad range of sectors, including Agricultural, Automotive, Construction, and Switchgear.

Sujaya Industries is meticulous not only in the quality of the finished product but also in building close and long-lasting partnerships with customers. We're happy to assist in any way you need us to as we manage your products from design to delivery.





Pic. 02: Interaction of students and HR with various fabrication process

IMPACT OF THE VISIT

In the visit students to the industries, students were able to undergo practical experience and knowledge enhancement of different fabrication process which was carried out in the industries and also understand the quality of the product and suppliers demand.